



Mapbender

Basis – Technik – Ausblick

Christian Wygoda

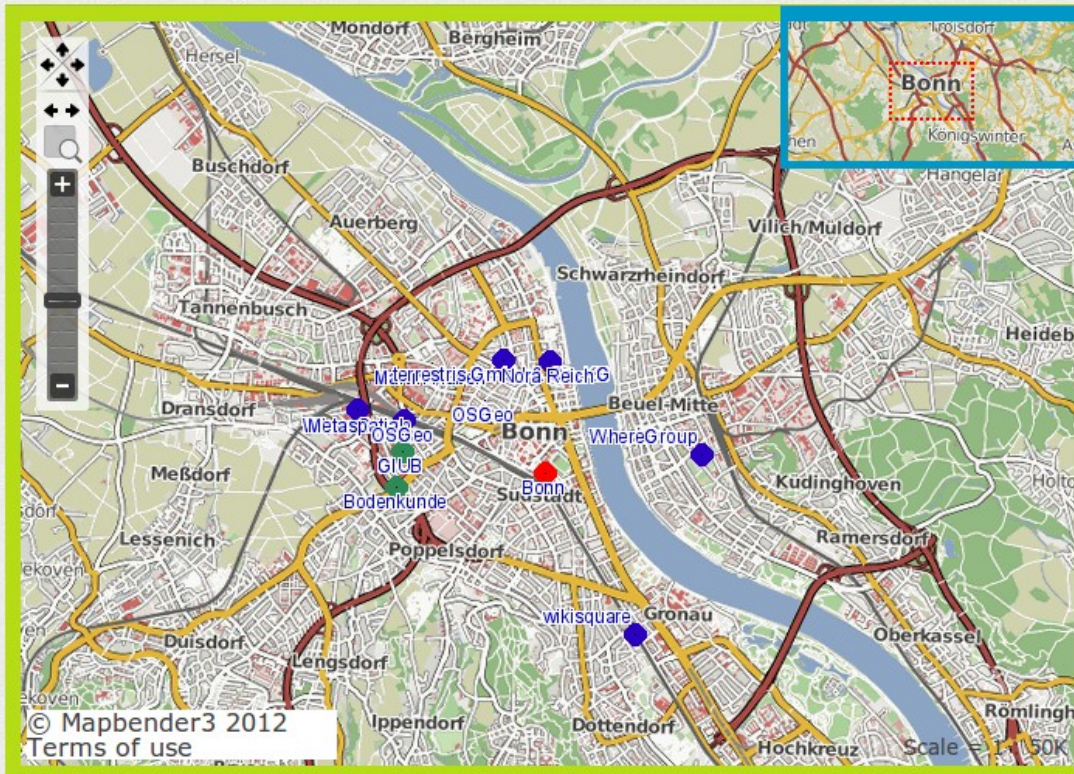
Where2B 2012



Basis-Demo



Maps About Legend



x: 367401.77507 y: 5621348.77220

EPSG:25832

Learn more about Mapbender3: <http://mapbender3.org/>



Mapbender is an official OSGeo project

© Mapbender3 2012
Terms of use

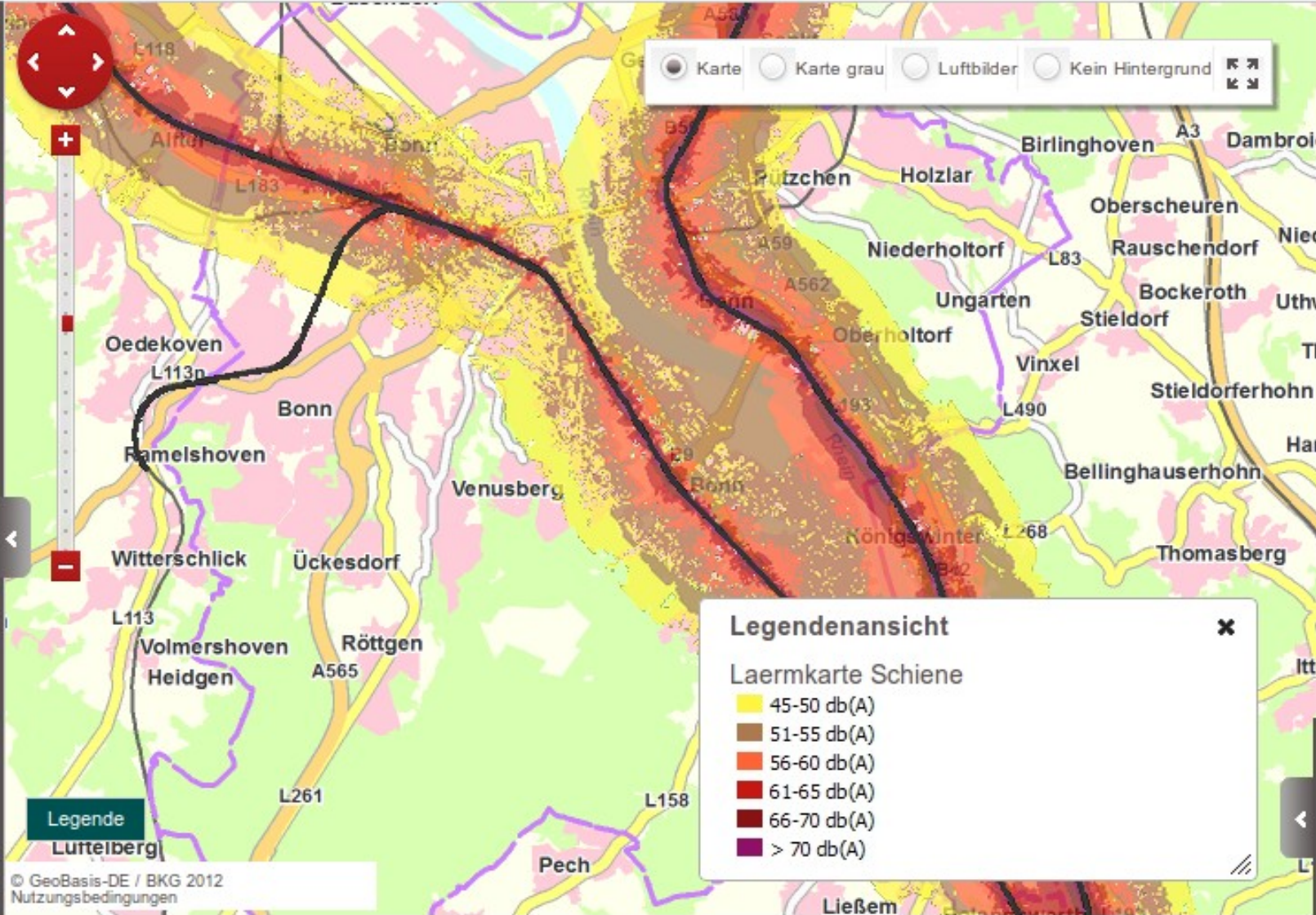
Scale = 1:50K

Suche nach Karten:

Karte suchen

Ort suchen

- Auswählbare Ebenen (2)**
- Eisenbahntrasse
 - Laermkarte Schiene



Maßstab 1:

Koordinaten: x=369209 y=5619256

ETRS89 / UTM Zone 32N



Öffnen Speichern Drucken Ansicht Werkzeuge

Suche nach Karten:

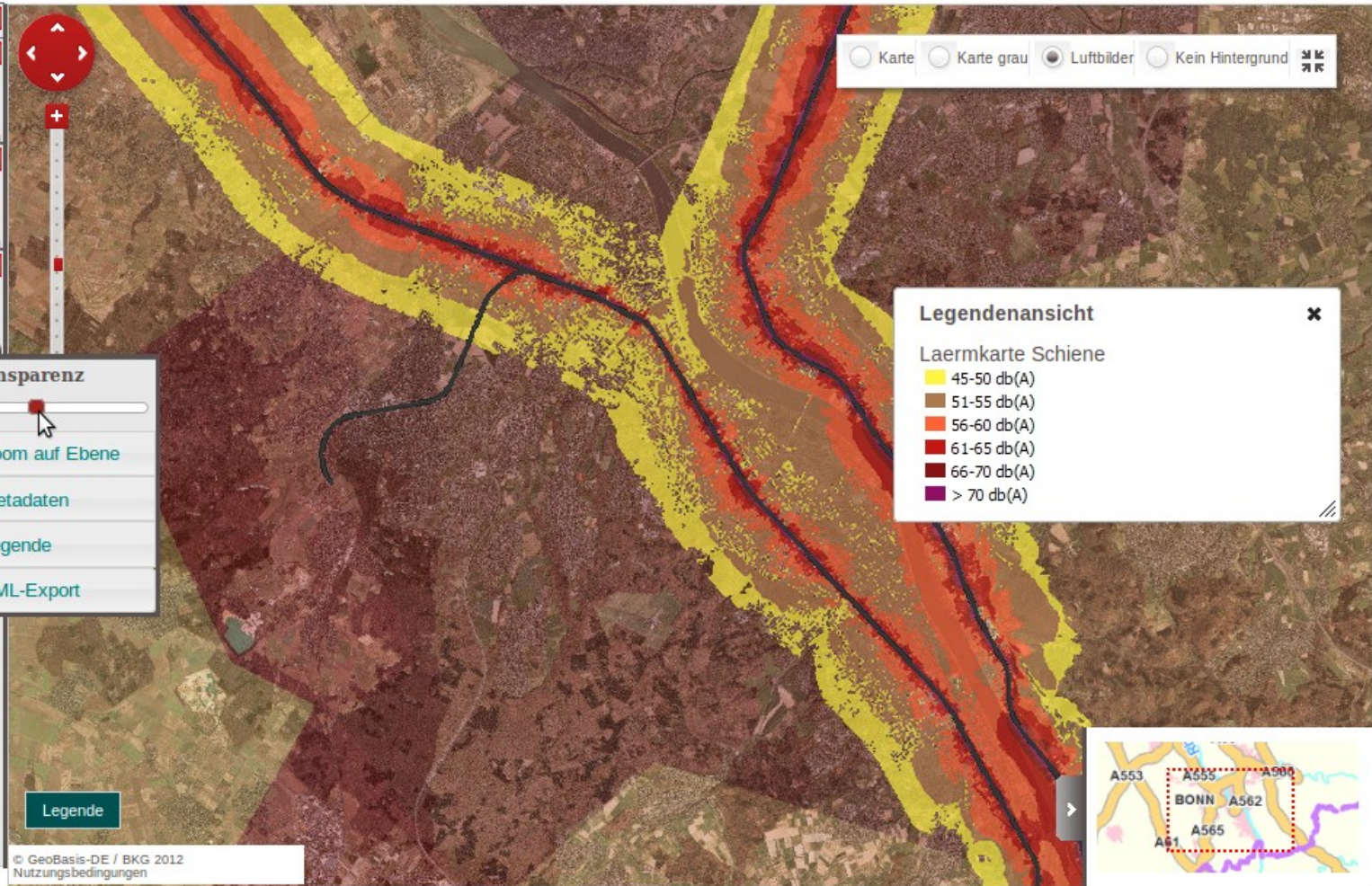
Karte suchen

Navigation icons: back, forward, home, search, print, zoom in, zoom out, XY

Bonn

Auswählbare Ebenen (3)

- Eisenbahntrasse
- Laermkarte Schiene
- VBG_Einwohnerdichte



Map style controls: Karte, Karte grau, **Luftbilder**, Kein Hintergrund

Legendenansicht

Laermkarte Schiene

- 45-50 db(A)
- 51-55 db(A)
- 56-60 db(A)
- 61-65 db(A)
- 66-70 db(A)
- > 70 db(A)

Transparenz

Zoom auf Ebene

Metadaten

Legende

KML-Export

© GeoBasis-DE / BKG 2012
Nutzungsbedingungen



Maßstab 1: 100000

Koordinaten: x=-, y=-

ETRS89 / UTM Zone 32N



radwanderland
Sattelfest durch Rheinland-Pfalz



Rheinland-Pfalz

Startseite

Radrouten

Radwegenetz

Routenplaner

A++ Kontakt Hilfe Impressum Über uns

Eingabe Start/Ziel... ?

Rheindiebach

Entfernung: 2,682 km

Über - oder Klick in Karte

Bacharach

Optionen ein-/ausblenden ?

Streckeninformationen ?

Entfernung: 2,682 km

Aufsteigend: 23 m

Absteigend: 22 m

Route umkehren

Route zurücksetzen

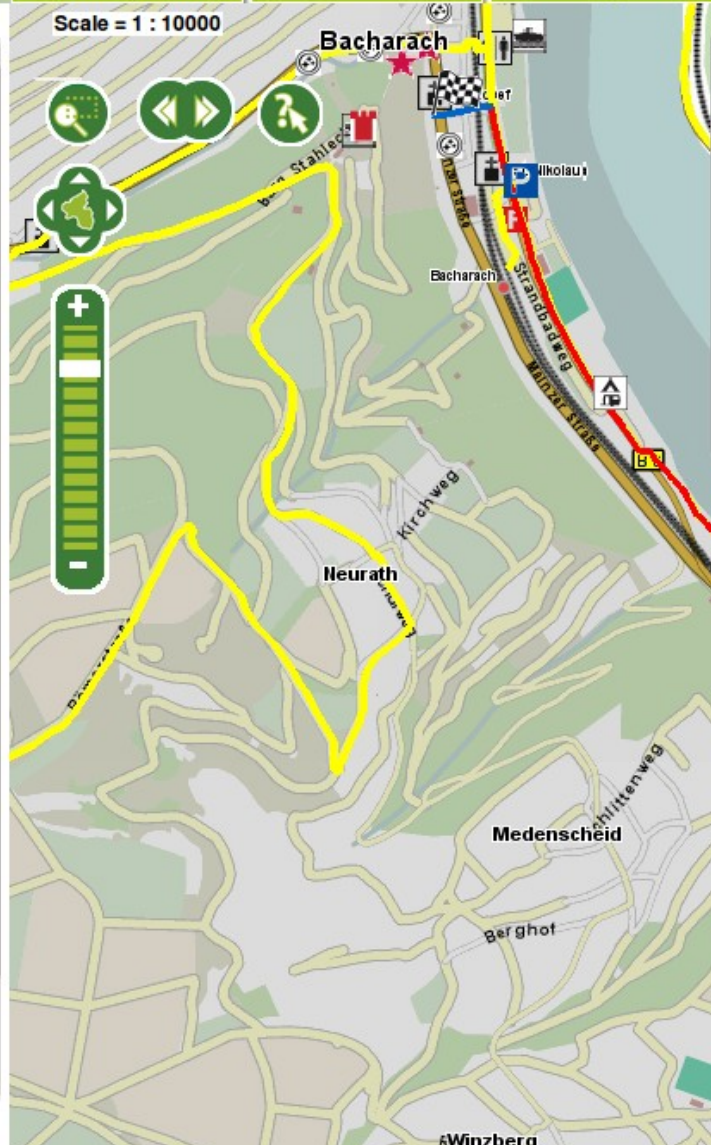
Details der Routenführung

- Radwegenetz
- Verlauf auf Straßen
- Verlauf außerhalb von Rheinland-Pfalz



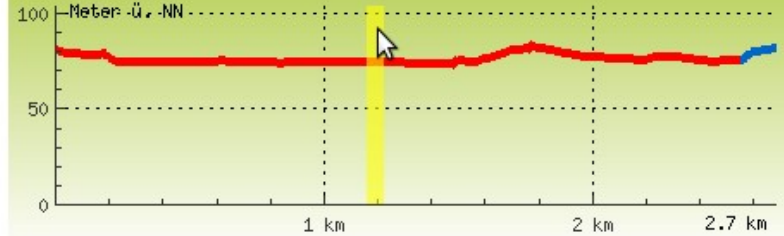
Einstellungen

Scale = 1 : 10000



Route

Höhenprofil



offen, sympathisch, zukunftsorientiert

Lippe

GEOPORTAL

Thematische Auswahl
Allgemeine Suche
Adress- und Flurstücksuche
Kartenanzeige

Geoportal Kreis Lippe ▶ Kartenanzeige



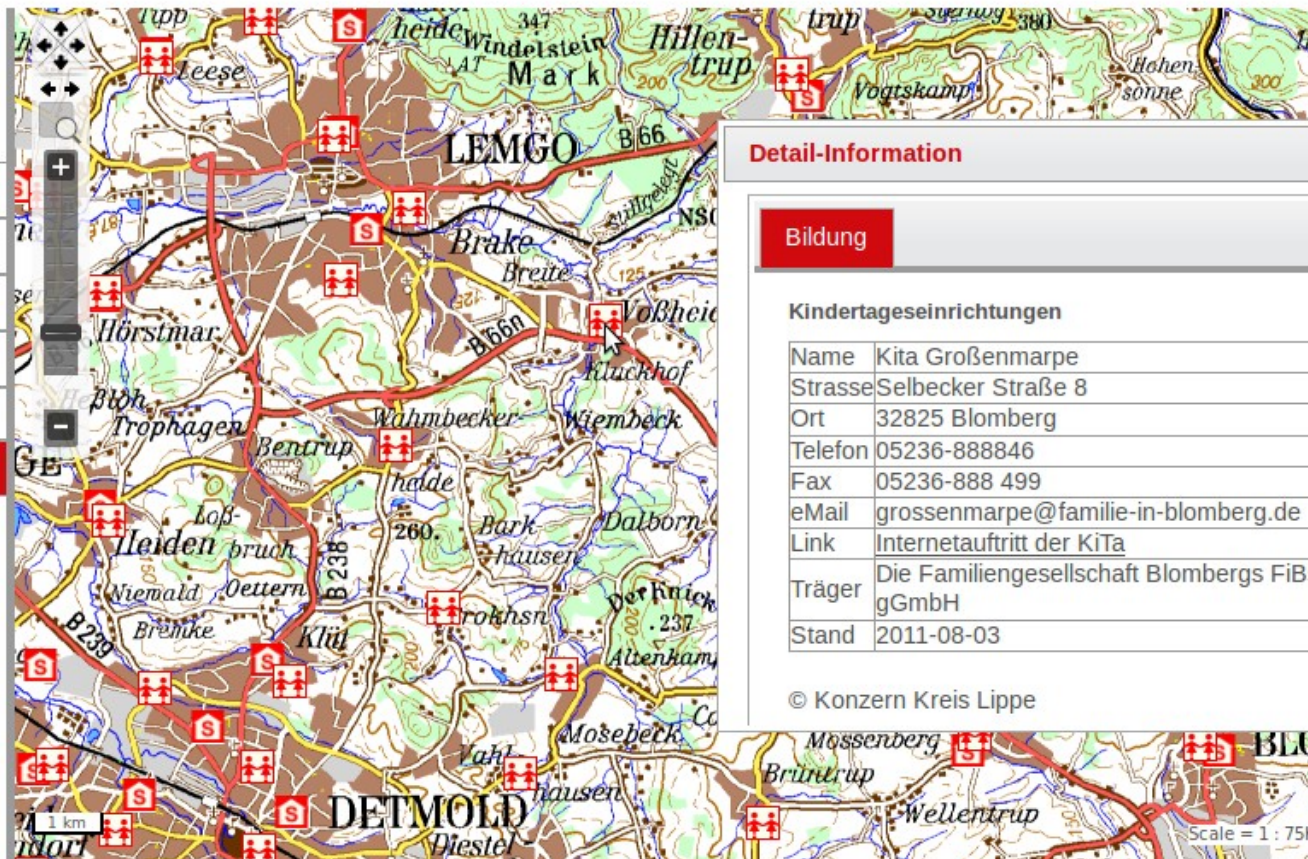
Kartenebenen

WMS laden

Legende



Information



Detail-Information

Bildung

Kindertageseinrichtungen

Name	Kita Großenmarpe
Strasse	Selbecker Straße 8
Ort	32825 Blomberg
Telefon	05236-888846
Fax	05236-888 499
eMail	grossenmarpe@familie-in-blomberg.de
Link	Internetauftritt der KiTa
Träger	Die Familiengesellschaft Blombergs FiBs gGmbH
Stand	2011-08-03

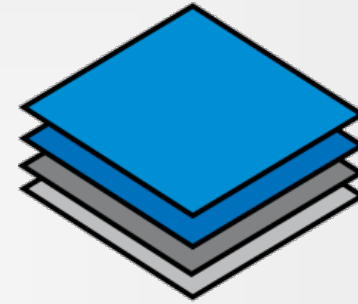
© Konzern Kreis Lippe

Koordinaten: x= 497390.25764 y= 5761806.09429

© Copyright

ETRS89 / UTM Zone 32N

Scale = 1 : 75K

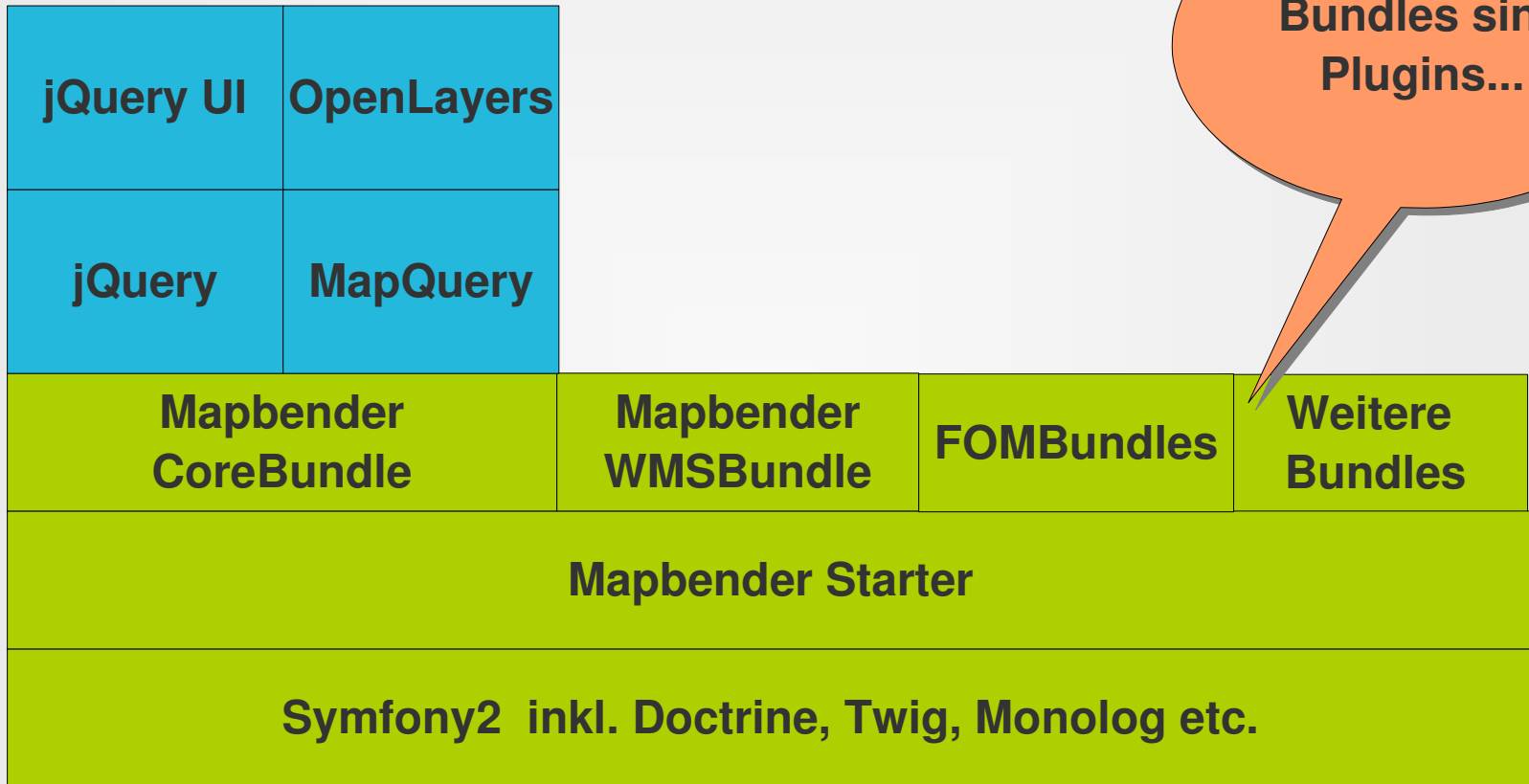


MapQuery

jQuery
user interface



Mapbender3-Bausteine





- Objektorientiertes PHP-Framework
- Performance-Features
 - Eingebauter Klassencache
 - PHP-APC ready (Byte Code Cache)
- Bausteinphilosophie
 - Symfony Components
 - Doctrine, Twig, Monolog...
- Keine JavaScript-Vorgaben



Unterstützung durch den Symfony Profiler

Mapbender Base Style De... x

moehre.local/mapbender3/application/web/app_dev.php/application/mapbender_user2

Oslo Petersburg
Dublin Praha Kiev
Madrid Tirane

Learn more about Mapbender3:
<http://mapbender3.org/>

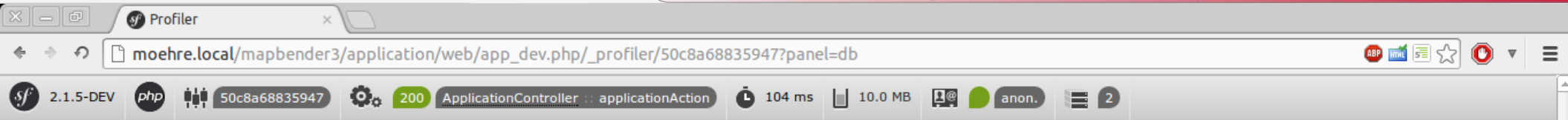
OSGeo Project
Mapbender is an official OSGeo project

Maps About Feature info Legend

School of GeoSciences
City of Helsingborg
geoGLIS
Hamburg
Hannover Potsdam
Stadt Frankfurt (Oder)
Blah
EvLU
Kassel Leipzig
Köln
Trier Nürnberg
CTU in Prague
private
Géosignall
Position-Control GmbH
Freiburg im Breisgau München
AGIT 2006
campocamp
IOWater
home
Prometeo SRL
Scale = 1 : 10M

© Mapbender3, 2012
Terms of use

sf 2.1.5-DEV php 50c8a68835947 200 ApplicationController applicationAction 104 ms 10.0 MB anon. 2



Search on Symfony website OK

- CONFIG
- REQUEST
- EXCEPTION
- EVENTS
- LOGS
- TIMELINE
- ROUTING
- SECURITY
- E-MAILS

View all Profile for: GET http://moehre.local/mapbender3/application/web/app_dev.php/application/mapbender_user2 by 192.168.2.141 at Wed, 12 Dec 2012 16:45:12 +0100

Queries

Connection default

```
+ SELECT t0.id AS id1, [...] FROM mb_core_application [...] WHERE t0.slug = ? LIMIT 1
```

Parameters: [mapbender_user2]

[Display runnable query]

Time: 1.64 ms [Explain query]

Explanation:

QUERY PLAN

Limit (cost=0.00..8.27 rows=1 width=1895)

-> Index Scan using uniq_77f4a71d989d9b62 on mb_core_application t0 (cost=0.00..8.27 rows=1 width=1895)

Index Cond: ((slug)::text = 'mapbender_user2':text)

```
+ SELECT t0.id AS id1, t0.username [...] FROM fom_user t0 WHERE t0.id = ?
```

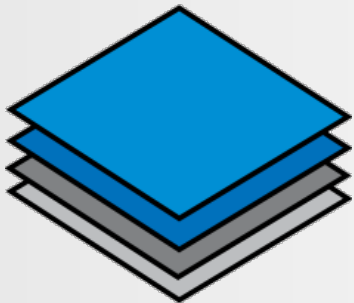
Parameters: [1]

[Display runnable query]

Time: 0.63 ms [Explain query]



- OpenLayers – DAS Schweizer Taschenmesser für **Web Maps**
- jQuery – DAS Schweizer Taschenmesser für **Web Apps**
- MapQuery – Schnittstelle zwischen jQuery & OpenLayers



MapQuery





- MapbenderCoreBundle (obligatorisch)
- FOMBundles – Friends of Mapbender (obligatorisch)
- Extension Bundles (optional)
 - WMSBundle
 - WMTSBundle
 - WMCBundle
 - Weitere in Planung



- Mapbender API
 - Applikationen
 - Elemente
 - Dienste / Layers
- Mapbender-Frontend



- Nutzung von WMS- und WMTS-Diensten
- Verwaltung von WM(T)S-Diensten
 - Parsen von GetCapabilities-Dokumenten
 - Konfigurieren von Dienst-Instanzen
- JavaScript-Funktionalität



- **Verwaltungsbackend**
 - Anwendungsverwaltung
 - Diensterverwaltung (API)
 - Benutzerverwaltung
- **Workflowspezifische Anwendungen und Formulare**
- **Fallback auf generische Formulare**



Browser window showing the URL: moehre.local/mapbender3/application/web/app_dev.php/user/login

Hello, please log in.

Username

Password

[Register](#) | [Forgot password?](#)

Development toolbar showing: 2.1.5-DEV, php, 50c8a7629293f, 200, LoginController, loginAction, 68 ms, 8.2 MB, 0



Applications - Mapbender x

moehre.local/mapbender3/application/web/app_dev.php/manager/applications



Applications

Title (Slug)	Description	Actions
Mapbender User Demo Map: Europe (mapbender_user)	Fullscreen style, Simple map showing WMS use.	View
Mapbender Base Style Demo Map Version 2: Germany (mapbender_user2)	Base style colored with expanding mapframe	View
Mapbender Base Style Demo Version 3: Bonn (mapbender_user3)	Base style 3 with colored mapframes with fixed size	View
demo (demo2)	Demoxxx	View Edit Delete
ewe (wewew)		View Edit Delete

Create new application

Applications

Services

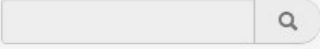
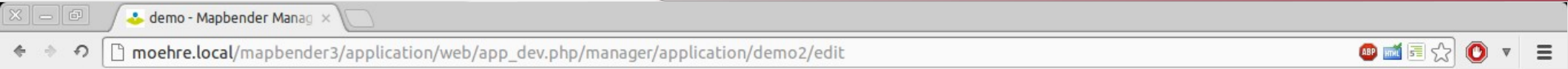
Users

You're logged in as root:

Your Account

Logout

sf 2.1.5-DEV php 50c8a77e931fc 200 ApplicationController : indexAction 170 ms 10.5 MB root 2



Applications

Services

Users

You're logged in as root:

Your Account

Logout

demo

Required fields are marked with dark labels, while optional fields have lighter labels.

Base data Elements Layers Security

Title Actions

Germany	Edit Source Instance	Delete
---------	----------------------	--------

Add Source

Update Delete Cancel






Rechteverwaltung mit ACLs

Required fields are marked with dark labels, while optional fields have lighter labels.

[Base data](#) [Elements](#) [Layers](#) **Security**

Published (optional)

Published

Permissions 

Role or user

u:root

View Edit Delete Undelete Operator Master Owner



Role or user

r:IS_AUTHENTICATED_ANONYI

View Edit Delete Undelete Operator Master Owner



Update **Delete** Cancel



Users - Mapbender Manag x

moehre.local/mapbender3/application/web/app_dev.php/manager/user



Users

Users Group

Name	E-Mail	Groups	Actions
root	w@w.de		Edit
astroidex	astrid.emde@wherogroup.com	<ul style="list-style-type: none"> wg Ma Edit group 	Edit Delete
demo_darfrix	demo_darfrix@gmx.de		Edit Delete
test	astridemde@gmx.de		Edit Delete

Create new user

Applications

Services

Users

You're logged in as root:

Your Account

Logout

moehre.local/mapbender3/application/web/app_dev.php/.../edit

217 ms 32.0 MB root 6



Mapbender3

Download

Home Was ist Mapbender3? Los geht's Dokumentation Community Download

Geoportal.DE
suchen. finden. verbinden.

Karten Suche Service

Geoportal » Karten

Suche nach Karten:

Karte suchen

Öffnen Speichern Drucken Ansicht Werkzeug

http://www.geoportal.de/

Bonn

Willkommen auf mapbender3.org

Willkommen auf der Mapbender3-Seite

Mapbender ist ein Content Management System für Kartenanwendungen und Geodatendienste. Die Software ist in PHP und JavaScript implementiert. Mapbender wird mit vorkonfigurierten Anwendungen





Table Of Contents

Welcome to Mapbender3's documentation!
▪ [Indices and tables](#)

Previous topic

[Welcome to the Mapbender3 documentation](#)

Next topic

[The Book](#)

This Page

[Show Source](#)

Quick search

Enter search terms or a module, class or function name

Welcome to Mapbender3's documentation!

Contents:

- [The Book](#)
 - [Installation](#)
 - [Git-based installation](#)
 - [Concepts](#)
 - [Configuring the database](#)
- [Bundle Documentation](#)
 - [MapbenderCoreBundle](#)
 - [FOSUserBundle - Users and Security](#)
- [The Developer's Book](#)
 - [Introduction](#)
 - [API documentation](#)
 - [Understanding Elements](#)
 - [Quick primer on using Git](#)
 - [Friends of Mapbender](#)

Indices and tables

- [Index](#)
- [Module Index](#)
- [Search Page](#)



Class Mapbender\CoreBundle\Component\...

api.mapbender3.org/class-Mapbender.CoreBundle.Component.Application.html

Overview

Namespaces

- Mapbender
 - Component
 - CoreBundle
 - Command
 - Component
 - Controller
 - DependencyInjection
 - Element
 - Entity
 - EventListener
 - Extension
 - Form
 - Security
 - Template
 - KmlBundle
 - ManagerBundle
 - MonitoringBundle
 - WmcBundle
 - WmsBundle
 - WmtsBundle
 - None
 - PHP

Classes

- Application
- ApplicationYAMLMapper
- BoundingBox
- Element
- Layer

Overview **Namespace** **Class** | Tree | Deprecated | Todo | Download

Class Application

Application is the main Mapbender3 class.

This class is the controller for each application instance. The application class will not perform any access checks, this is due to the controller instantiating an application. The controller should check with the configuration entity to get a list of allowed roles and only then decide to instantiate a new application instance based on the configuration entity.

Namespace: [Mapbender\CoreBundle\Component](#)
Author: Christian Wygoda
Located at [Mapbender/CoreBundle/Component/Application.php](#)

Methods summary

public	<code>__construct(Symfony\Component\DependencyInjection\ContainerInterface \$container, Mapbender\CoreBundle\Entity\Application \$entity, array \$urls)</code>	#
public object	<code>getEntity()</code> Get the configuration entity.	#
public integer	<code>getId()</code> Get the application ID	#
public string	<code>getSlug()</code> Get the application slug	#
public string	<code>getTitle()</code> Get the application title	#
public string	<code>getDescription()</code> Get the application description	#
public string	<code>render(string \$format = 'html', boolean \$html = true, boolean \$css = true, boolean \$js = true)</code> Render the application	#



Testen Sie Mapbender3

<http://mapbender3.org/demo/>



<http://mapbender3.org/en/download>

<https://github.com/mapbender/mapbender-starter>

Dokumentation zur Installation

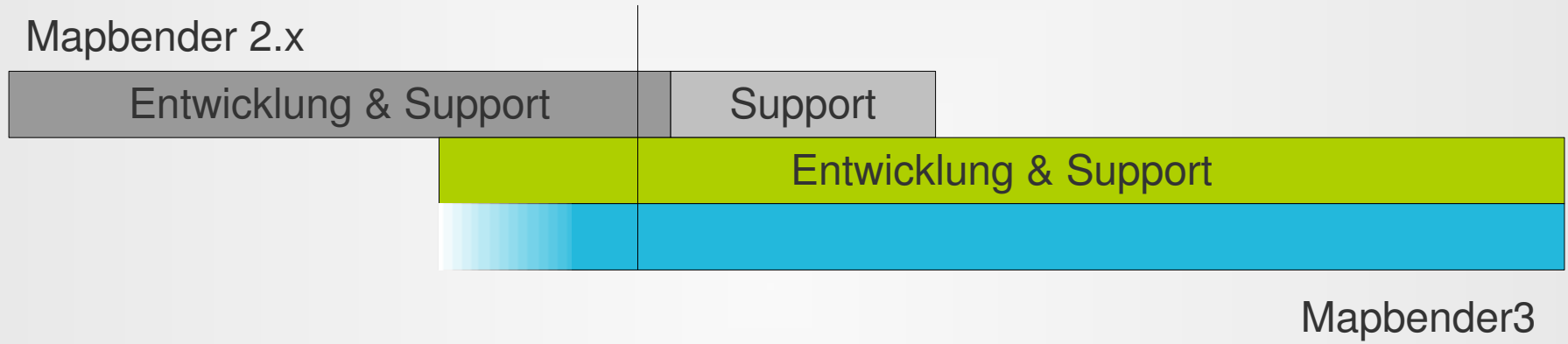
<http://doc.mapbender3.org>



- <http://mapbender.org>
- <http://mapbender3.org>
- <http://github.com/mapbender>
- <http://osgeo.org/mapbender>



Von Mapbender 2.x nach Mapbender3





- Bereitstellung weiterer Features aus laufenden Projekten (WFS Suche, Layerbaum, Digitalisierung etc.)
- OWSPProxy mit räumlicher Absicherung
- I18N: English, Deutsch
- 3.0 Stable: FOSSGIS 2013



WhereGroup

МНГІСІОПБ

Vielen Dank für ihre Aufmerksamkeit

Christian Wygoda

E-Mail: christian.wygoda@wherogroup.com

Mailing-Liste

mapbender-users@list.osgeo.org

Mit freundlicher Unterstützung der



WhereGroup

Creative Commons Share Alike License 3.0

Copyright © 2012: Christian Wygoda